









# Yepp® maxi

- Gebruiksaanwijzing • User instructions
- Mode d'emploi • Gebrauchsanweisung
- Intrucciones para el uso • Manuale
- Brugsanvisning • マニュアル

 FRAME FIXATION  
 26" / 28"  
 No 5  
 Ø 28-40  
 max 22 kg / 48 lbs  
  
 EN 14344



# Yepp® accessoires



Make every day  
a  Yeppy day!

[www.yepp.nl](http://www.yepp.nl)

[www.yepp-abc.com](http://www.yepp-abc.com)



2010:  
good industrial  
design



red dot design award  
winner 2009



[www.yepp.nl](http://www.yepp.nl)

ORIGINAL **GMG** PRODUCT

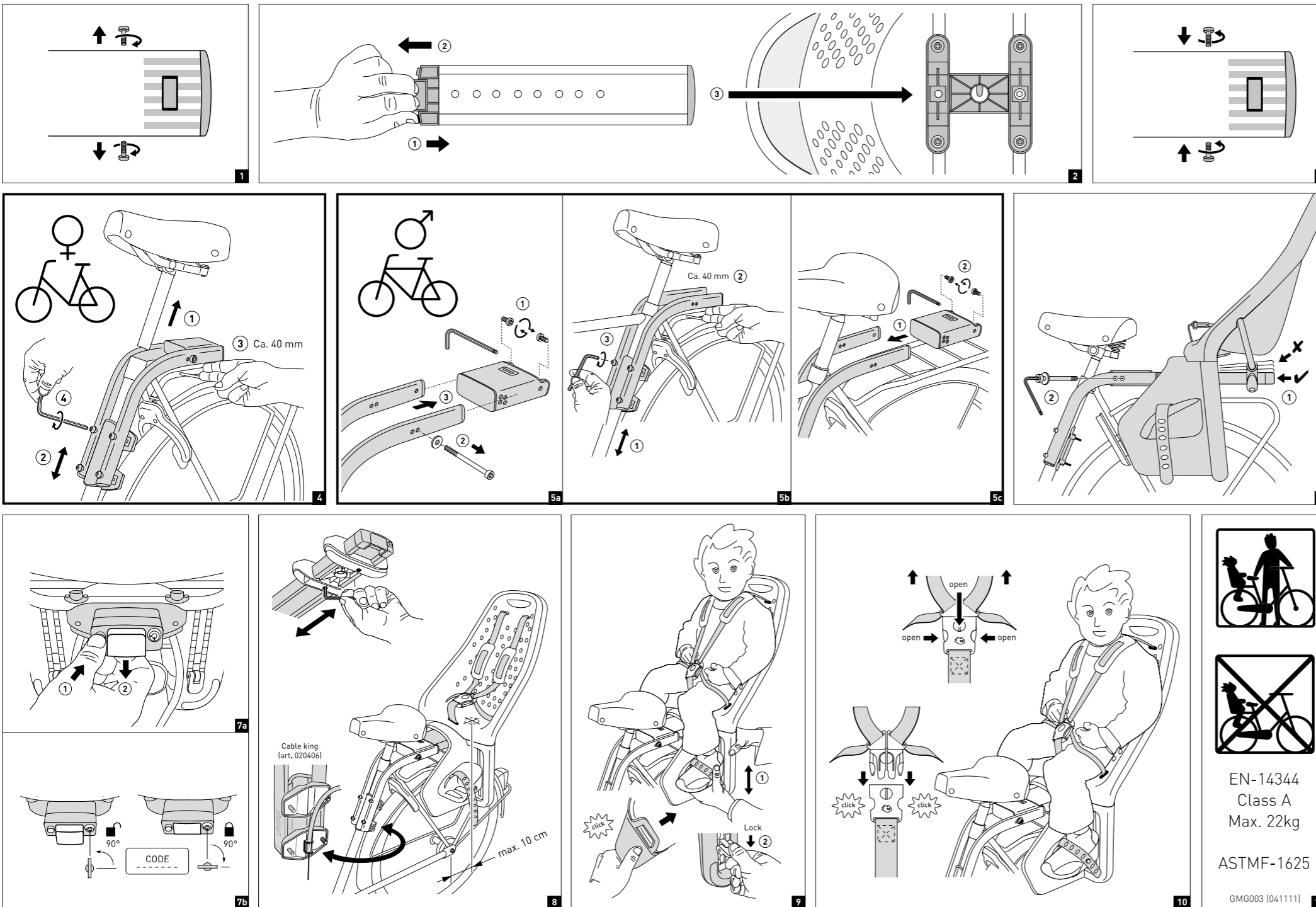


EN-14344  
Class A  
Max. 22kg

ASTMF-1625

GMG003 [041111]

**GMG bv**  
Zwanenburgerdijk 348c  
1161 NN Zwanenburg  
info@yepp.nl  
[www.yepp.nl](http://www.yepp.nl)



## Installation instructions for the Yepp® Maxi Frame fixation **UK**

The Yepp Maxi Easyfit is suitable for carrying children up to a maximum weight of 22 kg (about 6 years old) and meets European standard EN 14344 and American standard ASTM 1625-00. Do not use the seat if your child can't sit upright, at least for the time of the journey. Because of different safety regulations the Yepp Maxi may not be sold or used in the USA and Canada.

The Yepp Maxi with its seat post fixture is suitable for common bicycles with 26 or 28 inch wheels and frame size of 51 cm or larger and a round steel seat post diameter of 28 - 40 mm. Also see the warnings and instructions in this guide.

### MOUNTING

**A** - Assemble the aluminium profile under the seat. First remove the 2 hexagon screws on both sides (**pic.1**). Press the red button and simultaneously pull the grey handle on the profile and push it in the unit, from back to front (**pic.2**) Please make sure that the grey handle stays out during this action. Push the profile to the best position and tighten the screw firmly (4Nm). The best position depends on the gravity point ( see also point E). Remount the 2 hexagon screws on both sides again and tight them firmly (4Nm) (**pic.3**).

**B** - Mount the seat post adapter on the frame of the bicycle. For a ladies bicycle you simply can remove the saddle and place the complete adapter over the frame tube (**pic.4**). For a men's bicycle you have to dismount the adapter house first (**pic.5a**). Mount the adapter on the correct height leaving app. 4 cm between luggage carrier and seat (**pic.5b**) and tighten the screws diagonally firmly (5Nm). If there are cable fixations in the way you can use the "Cable King" (**pic.8**), this is an accessory (art. 020406).

**C** - Press the red knob and simultaneously pull the grey handle. Position the seat and push the seat straight into it's adapter until it clicks into place (**pic.7a**). This means that the seat is secured automatically. Check this by pulling the seat backwards. If the seat is secured properly, you will not be able to pull it out. For extra security always lock the seat. The lock cannot be closed unless the seat is secured properly (**pic.7b**).

**D** - The angle of the seat is adjustable for maximum comfort (**pic.6**). Please place the seat as horizontal as possible, if that is not possible we advice to slightly recline the seat towards the back. If the seat tilts forward it is possible for the child to slide out.

**E** - Position the seat as far as possible to the rear to create as much space for your child as possible. However the gravity point may not exceed 10 cm beyond the axle of the wheel (**pic.8**). Adjust if necessary.

**F** - For optimal protection use the extra foot protectors (**pic.9**).  
**The Yepp Maxi is now ready for use.**

**G** - Adjust the footsteps to the correct height (**pic.9**). Determine the correct height by measuring the length of your child's lower leg, from below the knee to the sole of the foot. This measurement must match the distance from the seat to the underside of the footrest. Always use the foot support straps.

**H** - Place your child in the seat and adjust the length of the harness by sliding the buckles. The harness must be tight, however the child must not be harmed. To open the buckle press both half round parts and simultaneously both the sides (**pic.10**).

## UK INSTRUCTIONS FOR USE

- Make a test ride, without your child, to see if everything is mounted correctly and the seat does not affect the cycling and everything is still functioning.
  - Always close the straps. Make sure your child is not able to remove its feet, but be sure the child is not hurt if they are too tight.
  - Cleaning of the Yepp Maxi is simple: clean with lukewarm soapy water. Never use aggressive cleaning agents.
  - If you have any doubts regarding the assembly of this seat on your bicycle, we recommend you obtain further information from your bicycle dealer.
- 

### WARNINGS AND SAFETY ADVICES

**WARNING!** Never modify the seat yourself.

- ALWAYS remove the seat when putting the cycle on a cycle carrier on a car.

**WARNING!** Do not use the seat if any part of it is faulty. Any broken part must be replaced immediately. Consult your dealer.

**WARNING!** Never leave your child unattended in the seat.

**WARNING!** Note that cycling with a child in a child seat can affect the way the cycle behaves, especially when going round corners and when riding off. Use the Yepp Maxi only on bicycles that are suitable for carrying the extra load. Check the manual of the bicycle or ask the bicycle manufacturer for advice.

**WARNING!** Never carry bags or other luggage in the seat. If you will carry additional loads, they should be placed at the opposite site of the bicycle, for instance when you use a rear seat you should place the luggage on a front luggage carrier.

- Check after assembling if all fasteners are tightened properly and everything functions correct.
- Make sure that the Yepp Maxi is locked at all times by turning the anti-theft lock in the in "lock" position with the adjunct key (fig.7b). This is safe and prevents possible theft of your Yepp Maxi. Keep the key code for reference, you will need it when you want to order spare keys.
- The Yepp Maxi with its seat post fixture is EXCLUSIVELY suitable for mounting on STEEL frames with a seat post diameter of 28 - 40 mm
  - The Yepp Maxi is not suitable for use on lightweight ( e.g. carbon ) frames , always consult your dealer or the manufacturer.
  - GMG BV can never be held liable for any damage, malfunction or breakage of the frame as a result of the installation or use of a Yepp bike seat.
  - The Yepp Maxi is not suitable for use on a moped. The use on E-bikes is allowed if they are sufficiently strong enough to carry the extra load. Always consult the bicycle manufacturer for advice.
  - The Yepp Maxi is designed for average daily use. It is not meant to be used on extreme circumstances such as *off-road* or ATB-courses
  - Make sure that the Yepp Maxi is always fully inserted in the adapter. The grey handle must always be fully closed.
  - Always fasten the straps, even if you are not carrying a child in the seat.
  - Always use the foot support straps.
  - GMG recommends that your child wears a properly-fitting helmet.
  - Make sure your child is warmly dressed as they will be sitting still and will therefore be more sensitive to the cold.
  - Use a good two-legged stand.
  - Please do not transport children under the age of 9 months or lighter than 9 kg and/ or children who are still too small to sit independently at least for the time as the intended cycle journey.

- Never carry two children in one seat
- Never lift the Yepp Maxi with your child still seated.
- Make sure the sun did not overheat your Yepp Maxi before placing your child.
- Check regularly that your child has not become too heavy or too tall for the Yepp Maxi. The maximum weight is 22 kg and the maximum age is 6 years. For bigger children GMG offers the Yepp Junior.
- Check regularly if all fasteners are sufficiently tight.
- Check of the use of the Yepp Maxi is permitted by law in the country you want to use it.
- The minimum age for a cyclist to carry a child in a Yepp Maxi is 16 years. The applicable legislation may vary by country.
- Check regularly that limbs and clothing cannot come near rotating or moving parts of the bicycle. For instance a foot in the spokes or a finger in the brake mechanism
- If your saddle has coil springs, cover them with protectors so that your child's fingers cannot become trapped in them.
- Always replace the seat after an accident, even there is no visible damage.
- Additional seat post adapters are available for attaching the seat on a second bicycle.

## ACCESSORIES

For the Yepp Maxi various accessories are available. Please refer to our website [www.yepp.nl](http://www.yepp.nl) for the latest list.

---

## GUARANTEE

GMG guarantees that this product has been manufactured according to the latest European safety standards and quality requirements for this product and that this product at the time of purchasing has no defect in workmanship and material. During production various quality checks have been performed. In case, despite all our efforts, during our guarantee period of 24 months, this product shows a material and/or manufacturing fault (with normal use as described in this manual), then GMG is required to respect this guarantee. In that case please contact your dealer. For detailed information on the application of the guarantee you can contact your dealer.

### The guarantee is excluded in the following cases :

- In case of use different than described in the manual
- The product is brought for repair through a not authorized dealer
- The product is not presented with the original proof of purchase to the manufacturer.
- Repairs were performed by third party or not authorized retailer
- The defect was caused by misuse, careless use or maintenance, by neglect or impact damage to the seat and/or frame
- In case of normal wear to parts, which you may expect during daily use of a product.

### Since when ?

The guarantee term starts at the date of purchasing of the product.

### For what period?

The guarantee is for a period of 24 consecutive months.

The guarantee is only for the first owner and cannot be transferred.

### What do you have to do?

After purchasing the product you must carefully keep the proof of purchase. The date of purchasing must be clearly visible on the proof of purchase. In case of any problems or defects you have to go to the retailer. You cannot demand exchange or return. Repairs will not affect the duration of the guarantee. Products sent directly to the manufacturer are not eligible for guarantee.

**UK** This warranty is according to the European Standard 99/44/EG dated May 25th 1999.

**Guarantee specifications:**

	< 6 months after purchase	> 6 months after purchase
Fading	✓	?
Corrosion	✓	?
Harness wear	✓	?
Feet rests	✓	?

✓ = Guarantee      ? = Guarantee possible  
after inspection

Rights of modifications reserved

**GMG bv**  
Zwanenburgerdijk 348c - 1161 NN Zwanenburg - The Netherlands  
**www.yepp.nl**