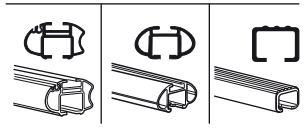
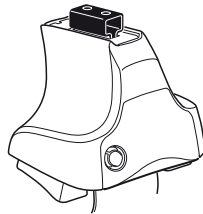


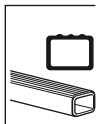
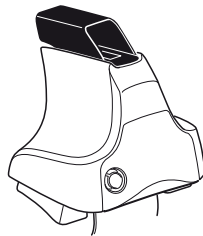
Kit 1358

MITSUBISHI Colt, 3-dr Hatchback, 05-

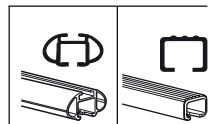
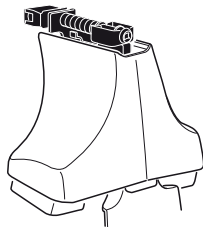
480R
754



480



750



Max. 50 kg
Max. 110 lbs

x1

x4

x4

x1

x4

x4

x4

x1

x4

x4

480R/754
 480
 750

x2 x2 x2 x4	x2	x2 x2 x4 x4	x2 x2	x2

514 x1

515 x1

516 x2

95 x1

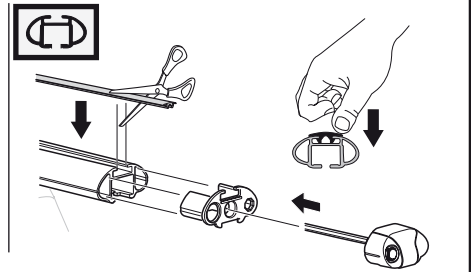
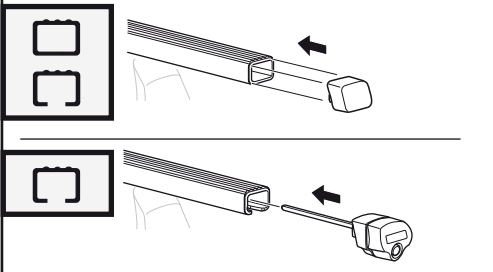
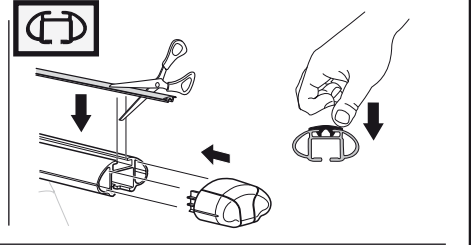
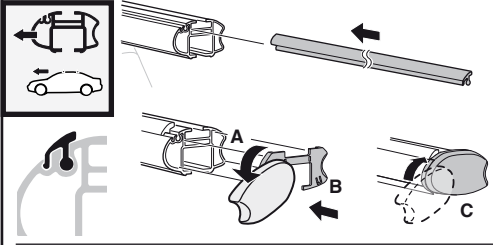
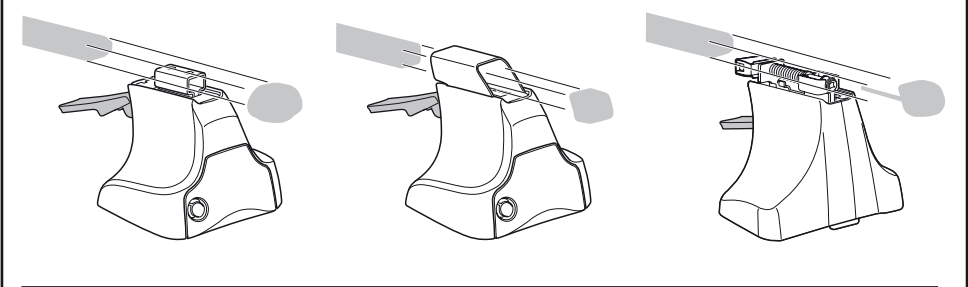
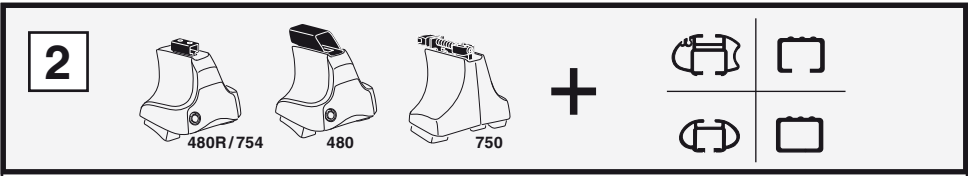
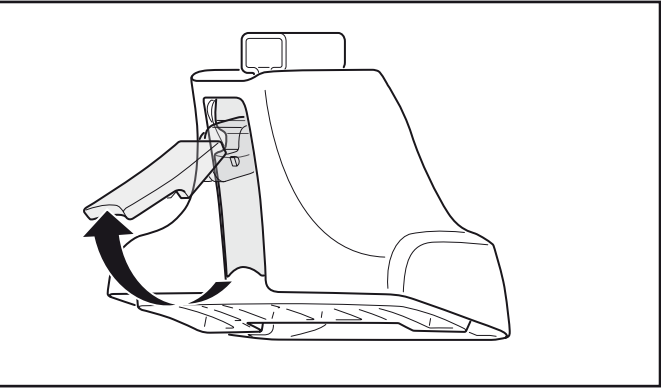
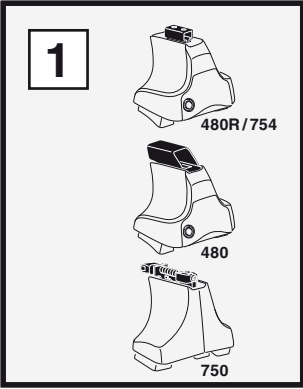
96 x1

97 x1

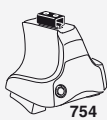
98 x1

x1

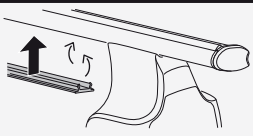
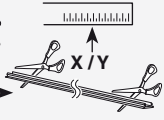
Kit



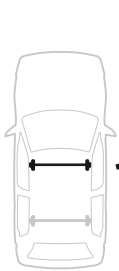
3



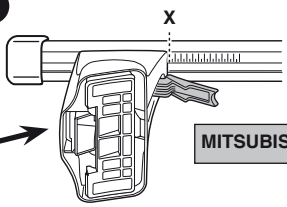
754



750



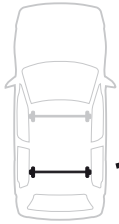
1



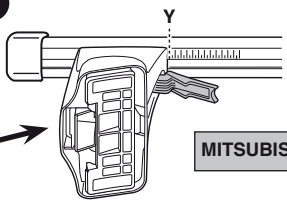
2



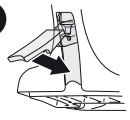
MITSUBISHI Colt, 3-dr Hatchback, 05-	X
	39



1



2



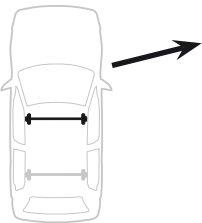
MITSUBISHI Colt, 3-dr Hatchback, 05-	Y
	29



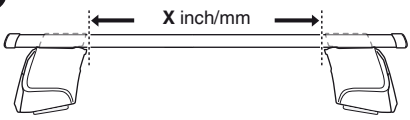
480R



480



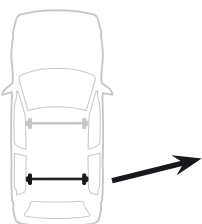
1



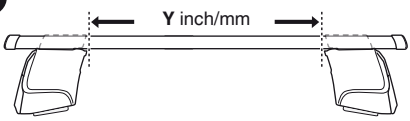
2



MITSUBISHI Colt, 3-dr Hatchback, 05-	X inch	X mm
	41 "	1041 mm



1



2

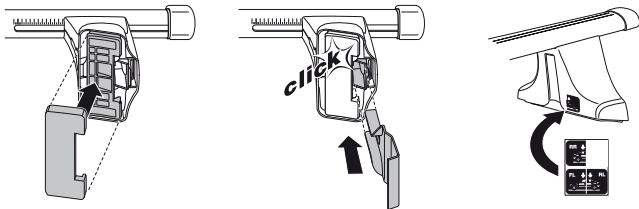
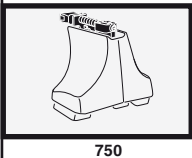
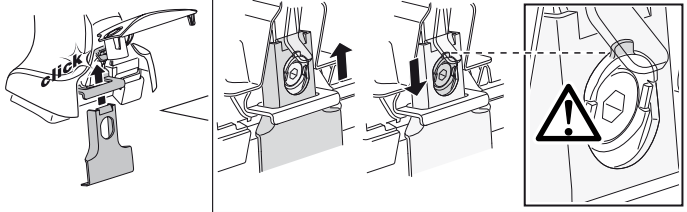
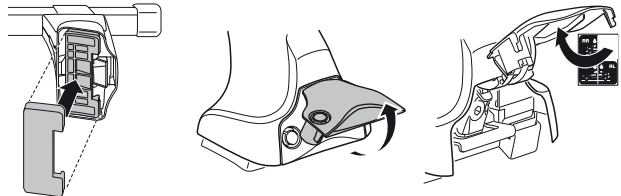
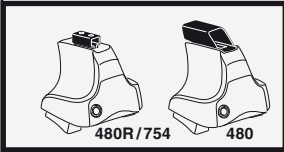
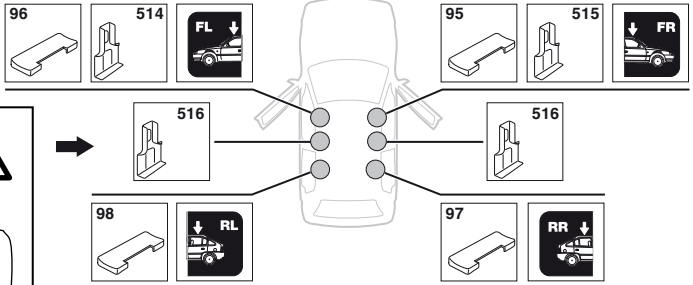
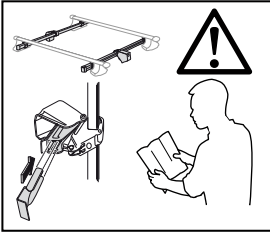


MITSUBISHI Colt, 3-dr Hatchback, 05-	Y inch	Y mm
	37 "	941 mm

4

MITSUBISHI Colt, 3-dr Hatchback, 05-

SRA



5


MITSUBISHI Colt, 3-dr Hatchback, 05-

X mm

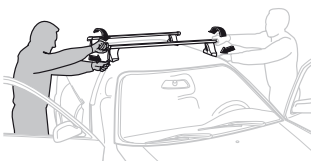
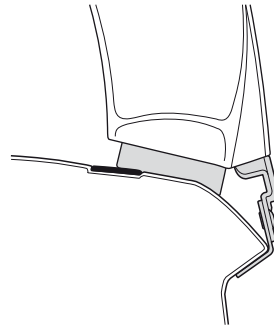
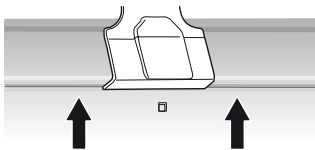
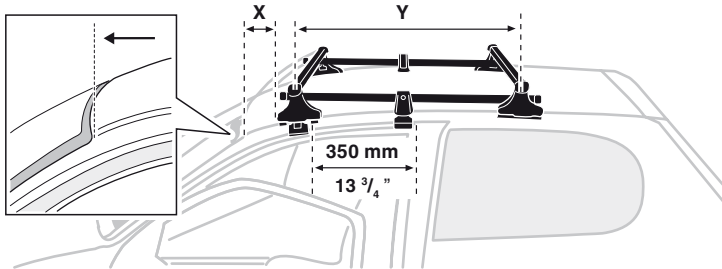
Y mm

X inch

Y inch

270 mm

700 mm

10 ⁵/₈ "27 ¹/₂ "
GB/US Tighten alternately

D Die Schrauben abwechselnd anziehen

F Serrer alternativement chaque côté

NL Afwisselend aan de linker- en de rechterkant aandraaien

FIN Kierrä vuorotellen

I Apertar alternativamente

PT Aperte alternadamente

S Dra åt växelvis

EST Pinguldage vaheldumisi

LAT Pievelciot pamišus

LIT Užsukinėkite pakaitomis

PL Śruby dokręcaj naprzemiennie

RU Затягивайте попеременно

CZ Pokręťta bagazníka dokręcaj dokręcaj naprzemiennie.

SK Dofahajte striedavo

SLO Privijajte izmenično.

HR Naizmjerno zategnite

HU Egymástól függetlenül szorítandó

GR Σφιγγετε εναλλάξ

TR Dönüşümlü sıkın

中文 交替拧紧

한국어 번갈아 가며 조이십시오.

日本語 交互に締め付けてください。

ไทย ชันในแบบสลับ

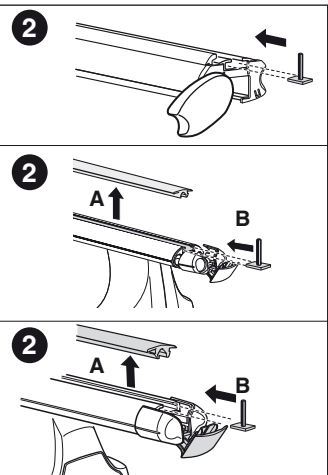
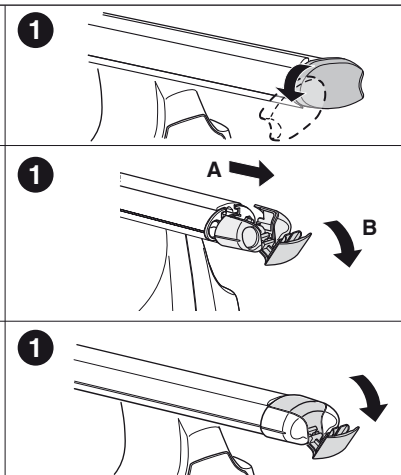
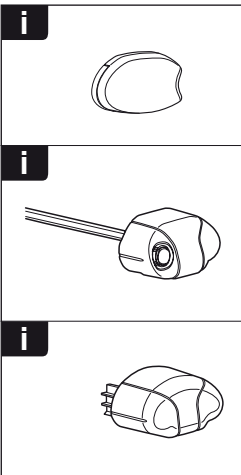
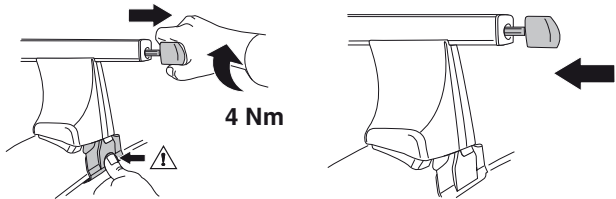
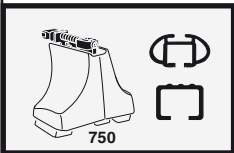
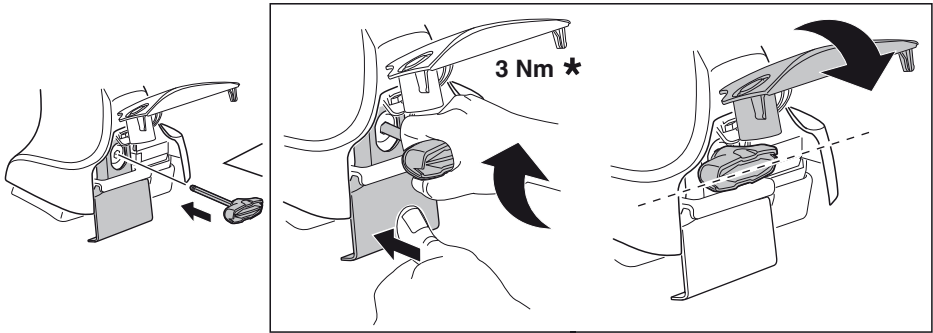
6

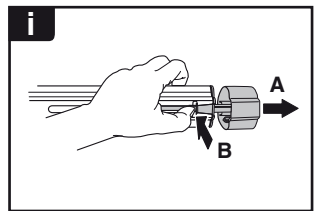
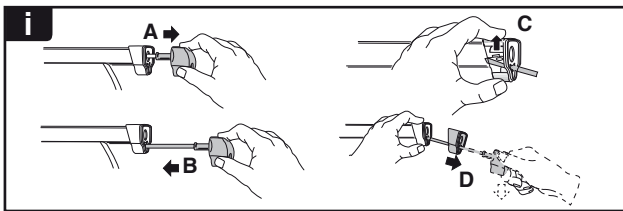
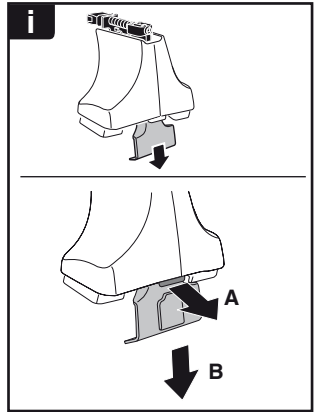
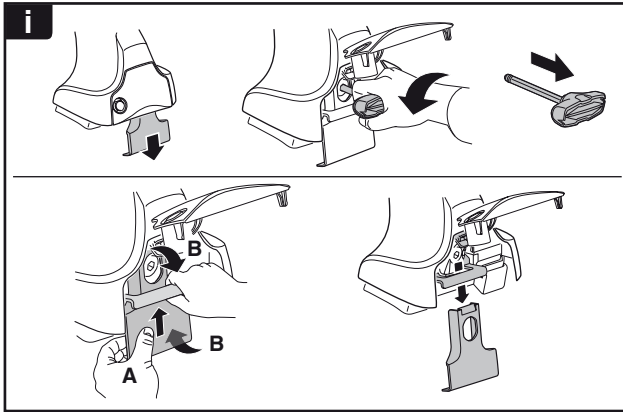


480R/754

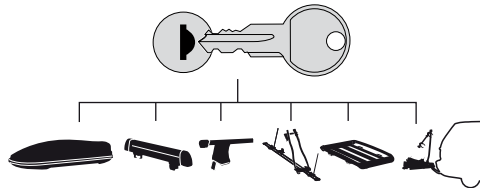


480





THULE
SWEDEN
**ONE
KEY
SYSTEM**



- 544 (x4)
- 596 (x6)
- 588 (x8)
- NA 510 (x10)
- EUR 452 (x12)
- ASIA



WW ▶ Thule Sweden AB, Box 69, 330 33 Hillerstorp, SWEDEN
NA ▶ Thule Inc., 42 Silvermine Road, Seymour, Connecticut 06483, USA

info@thule.com
customer.service@thule.com

www.thule.com